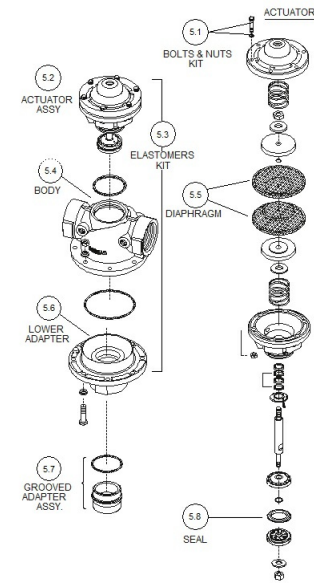
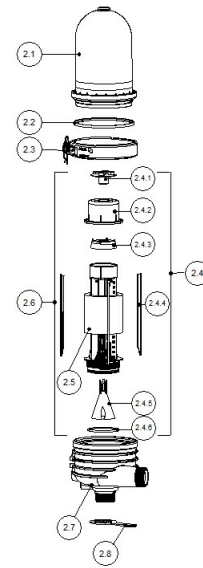
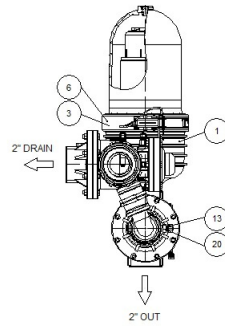
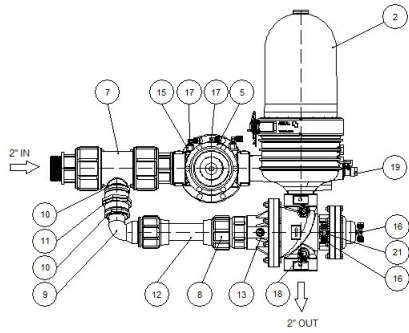


2" Compact



2" Compact

Pos.	Part No.	Description	Qty
1	710103-000011	BODY ASSEMBLY 2" SK RPA THR W/1/2"THR	1
2	600000-xxxxxx	2" SK RPA THR. PP W/TRH1/2"	1
2.1	710101-000899	2"-3" COVER PC TRANSPARENT	1
2.1	710103-004798	COVER 2"-3" FILTER RPP DW	1
2.2	770104-000001	HYDRAULIC SEAL 2"-3" VITON 70 SHRE	1
2.2	770104-000248	HYDRAULIC SEAL 2"-3" EPDM	1
2.2	770104-000251	HYDRAULIC SEAL 2" NBR 70 SHORE	1
2.3	760108-000002	FILTER CLAMP 2"-3" S/ST304	1
2.4	700101-002255	SPINE ASSEMBLY MODEL 2.8 2-3" SK RPA	1
2.4	700101-002256	SPINE ASSEMBLY MODEL 2.8 2-3" SK RPA LCE	1
2.4	700101-002257	SPINE ASSEMBLY MODEL 2.8 2-3" SK RPP EPDM SEALS DW	1
2.4	700101-002258	SPINE ASSEMBLY MODEL 2.8 2-3" SK RPA AW	1
2.4	700101-002259	SPINE ASSEMBLY MODEL 2.8 2-3" SK RPA SW	1
2.4.1	710101-000435	2"SK BUTTERFLY NUT RPA BLACK	1
2.4.2	710101-000106	2"SK SPINE TIGHTENING CYLINDER RPA BLACK	1
2.4.3	710101-000436	SK SPINE PISTON HDPE NATURAL DW	1
2.4.4	760109-000045	ANTI FRICTION S/ST316 F/SK DW	1
2.4.4	760109-000467	ANTI FRICTION SUPER DUPLEX F/2.7SK DW	1
2.4.5	770104-000372	CONE MEMBRANE NATURAL 65 SHORE 2.8 2"SPIN KLIN	1
2.4.5	770104-000375	CONE MEMBRANE EPDM 70 SHORE 2.7SPIN KLIN DW	1

---

---

**2" Compact**

Pos.	Part No.	Description	Qty
2.4.5	770104-000384	CONE MEMBRANE NATURAL 65 SHORE LCE 2.8 SPINE SK	1
2.4.6	770102-000034	PARKER O-RING 2-237 EPDM 70 SHORE YELLOW DOT	1
2.5	700101-000269	DISC SET PP 10MIC 2-3-4-6" SK	1
2.5	700101-001176	DISC SET PP 130MIC 2-3-4-6" SK DW	1
2.5	700101-001177	DISC SET PP 100MIC 2-3-4-6" SK DW	1
2.5	700101-001182	DISC SET PP 20MIC 2-3-4-6" SK DW	1
2.5	700101-001183	DISC SET PP 55MIC 2-3-4-6" SK DW	1
2.5	700101-001184	DISC SET PP 70MIC 2-3-4-6" SK DW	1
2.5	700101-001187	DISC SET PP 400MIC 2-3-4-6" SK DW	1
2.5	700101-001188	DISC SET PP 200MIC 2-3-4-6" SK DW	1
2.5	700101-001189	DISC SET PP 40MIC 2-3-4-6" SK DW	1
2.6	700101-002260	DISC ELEMENT PP 400MIC 2-3" SK RPA	1
2.6	700101-002261	DISC ELEMENT PP 70MIC 2-3" SK RPA	1
2.6	700101-002262	DISC ELEMENT PP 200MIC 2-3" SK RPA	1
2.6	700101-002263	DISC ELEMENT PP 100MIC 2-3" SK RPA	1
2.6	700101-002264	DISC ELEMENT PP 55MIC 2-3" SK RPA	1
2.6	700101-002265	DISC ELEMENT PP 40MIC 2-3" SK RPA	1
2.6	700101-002266	DISC ELEMENT PP 20MIC 2-3"SK RPA CLASSIC	1
2.6	700101-002267	DISC ELEMENT PP 130MIC 2-3" SK RPA	1
2.6	700101-002377	DISC ELEMENT PP 10MIC 2-3" SK RPA	1

2" Compact

Pos.	Part No.	Description	Qty
2.7	710103-006080	BODY 2" SK BATTERY RPA BSPT	1
2.8	760109-000055	WRENCH GALVANIZED F/BUTTERFLY NUT	1
3	770104-000248	HYDRAULIC SEAL 2"-3" EPDM	1
5	730102-000106	STRAIGHT FLOW 2X2 350 BSP RPA/DUPLEX BLACK SW BERMAD	2
5	730102-000108	STRAIGHT FLOW 2X2 350 BSP RPA BLACK AGRESSIVE WATER BERMAD	2
5	730102-000119	ANGLE FLOW 2X2 350 BSP RPA BLACK AGRESSIVE WATER BERMAD	2
5	730102-000167	ANGLE FLOW 2X2 350 BSP RPA BLACK BERMAD	2
5	730102-000169	STRAIGHT FLOW 2X2 350 BSP RPA BLACK BERMAD	2
5	730102-000283	STRAIGHT FLOW 2X2 350 BSP RPA BLACK BERMAD DW	2
5	730102-000290	ANGLE FLOW 2X2 350 BSP RPA BLACK BERMAD DW	2
5.1	730113-000761	BOLTS-NUTS KIT F/2" 350 BERMAD	1
5.1	730113-000762	BOLTS-NUTS KIT F/2" 350 BERMAD WA	1
5.2	730113-000331	VALVE ASSY. F/2" STRAIGHT FLOW PLASTIC BERMAD WA	1
5.2	730113-000346	VALVE ASSY. F/2" ANGLE FLOW BERMAD	1
5.2	730113-000507	VALVE ASSY. F/2" STRAIGHT FLOW PLASTIC BERMAD	1
5.2	730113-000589	ACTUATOR F/2" STRAIGHT FLOW BERMAD WA-S.DUPLEX	1
5.2	730113-000869	ACTUATOR ASSY. F/2" ANGLE FLOW PLASTIC BERMAD DW	1
5.2	730113-000871	ACTUATOR ASSY. F/2" STRAIGHT FLOW PLASTIC BERMAD DW	1
5.3	730113-000763	SEALS + DIAPHRAGM KIT F/2" 350 BERMAD	1
5.3	730113-000867	ELASTOMERS KIT F/2" 350 BERMAD DW	1

**2" Compact**

Pos.	Part No.	Description	Qty
5.4	730113-000317	BODY ASSY. F/2" STRAIGHT FLOW BERMAD	1
5.4	730113-000339	BODY ASSY.+LOW ADAPTOR F/2" STRAIGHT FLOW BERMAD	1
5.4	730113-000754	BODY ASSY. F/2" 350 PLASTIC BERMAD WA-DUPLEX-S/S316	1
5.4	730113-000759	BODY ASSY. F/2" 350 PLASTIC BERMAD WA	1
5.4	730113-000872	BODY ASSY. F/2" 350 BLACK PLASTIC BERMAD BSP DW	1
5.5	730113-000446	DIAPHRAGM F/2" STRAIGHT FLOW BERMAD	1
5.6	730113-000315	LOWER ADAPTOR F/2" STRAIGHT FLOW PLASTIC BERMAD	1
5.6	730113-000332	LOWER ADAPTOR F/2" STRAIGHT FLOW PLASTIC BERMAD WA	1
5.6	730113-000753	LOWER ADAPTOR F/2" 350 PLASTIC BERMAD WA-DUPLEX-S/S316	1
5.6	730113-000758	LOWER ADAPTOR F/2" 350 PLASTIC BERMAD WA	1
5.6	730113-000873	LOWER ADAPTOR F/2" 350 BLACK PLASTIC BERMAD BSP DW	1
5.7	700190-003407	2" GROOVED-BSP THREAD CONNECTOR ASSY	1
5.7	730113-000883	ADAPTOR+SEAL F/2" 350 BLACK PLASTIC BERMAD GRV/TRH DW	1
5.8	730113-000324	PLUG SEAL F/2" STRAIGHT FLOW BERMAD	1
5.8	730113-000881	SEAL F/2" VALVE EPDM BERMAD DW	1
6	760108-000002	FILTER CLAMP 2"-3" S/ST304	1
7	700190-000001	BYPASST FILTER, 2" COMPACT	2
8	780101-000340	COUPLING 2"X40MM MALE PP PLASSON	1
9	780101-000303	ELBOW 1 1/4"X40MM MALE PP PLASSON	1
10	710101-001433	COMPACT SPACER RPA BLACK	2

---

---

**2" Compact**

Pos.	Part No.	Description	Qty
11	780101-000335	COUPLING 1 1/4" PP PLASSON	1
12	710103-000196	EXTENSION PIPE 40/10 2" COMPACT PE CUT TO 265MM F/BATTERIES	1
13	710101-000148	GAUGE PORT PLUG W/HOLE BSPT RPP BLACK	2
15	730110-000001	1/4"-1/8" FING.FLTR BERMAD K PLAST BLACK	2
16	720501-000030	T-CONNECTOR 8MMX1/8"M X8MM BSPT ACETAL BLACK JOHN-GUEST	2
16	720501-000135	T-CON. 8MMX1/8"M X8MM BSPT RPP BLK TEFEN	2
17	720501-000007	L-CONNECTOR 1/8"M X8MM BSPT ACETAL BLACK JOHN-GUEST	3
17	720501-000137	L-CONNECTOR 1/8" X8MM BSPT AC BLK TEFEN	3
18	720501-000006	L-CONNECTOR 1/4"M X8MM BSPT ACETAL BLACK JOHN-GUEST	1
18	720501-000139	L-CONNECTOR 1/4"M X8MM BSPT ACETAL BLACK TEFEN	1
19	730104-000217	2-WAY BALL VALVE 1/2"X1/4" BSP BRASS MANUAL	1
20	720501-000148	NIPPLE 1/4"M X1/4"M BSPT PA66 BLK TEFEN	2
21	730113-000418	CONNECTOR 1/8FX1/8M BLACK PLASTIC BERMAD	2