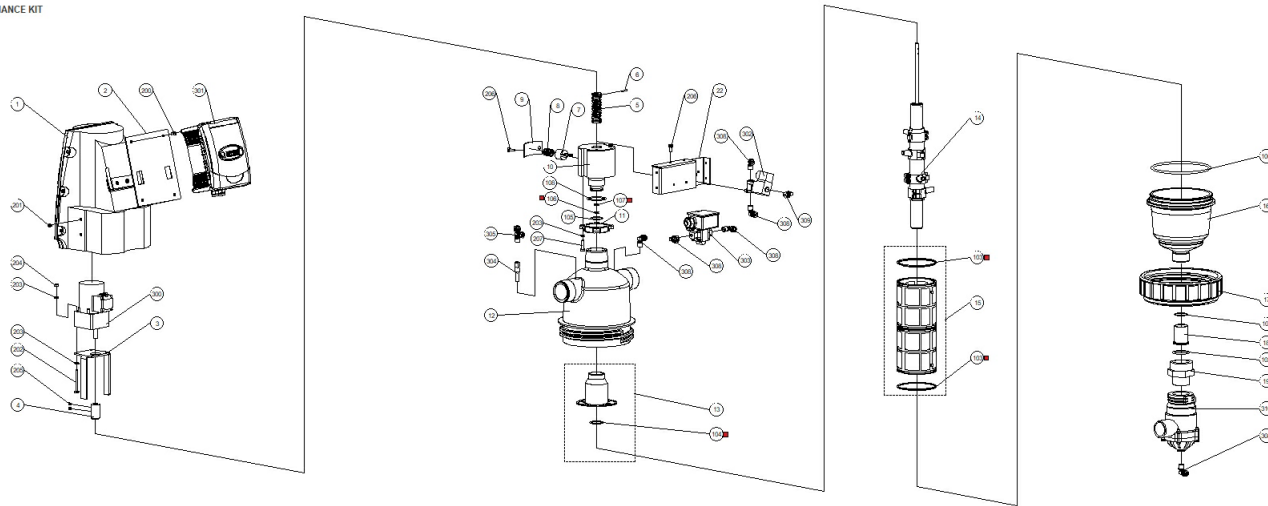


2" TAF-500

■ MAINTENANCE KIT



2" TAF-500

Pos.	Part No.	Description	Qty
1	710103-001204	COVER TAF-500/750 F/DRIVE UNIT	1
2	710105-004321	TAF-750 SLING S/ST316L PASSIVATION	1
3	710103-001217	BASE 2"-3" TAF-500/750 S/ST316L F/DRIVE UNIT	1
4	710103-001216	COUPLING 2"-3" TAF-500/750 S/ST316L MOTOR SHAFT	1
5	710103-001247	SCREW TAF AC REVERSED	1
6	760105-000029	SLOTTED PIN 3X20MM S/ST304 DIN1481	1
7	710103-001209	ENDLESS WORM TOOTH 2"-3" TAF-500/750 S/ST303	1
8	760107-000065	HELICAL SPRING ENDLESS WORM TAF S/ST302	1
9	710103-001210	TOOTH COVER 2"-3" TAF-500/750 S/ST316L	1
10	710103-001207	ENDLESS WORM HOUSING TAF-500/750 POM	1
11	710101-000760	TAF FLANGE BSP RPA BLACK	1
11	710101-000765	2" TAF CONNECTING FLANGE NPT RPA BLACK	1
12	710103-001200	HOUSING 2" TAF-500/750 BSPT ELECTRIC	1
12	710103-001202	HOUSING 2" TAF-500/750 NPT ELECTRIC	1
13	700190-001831	PRESSURE BALANCING ASSEMBLY 2"TAF ELECTRIC	1
14	700190-001848	SUCTION SCANNER (2"TAF) ASSY	1
15	700101-000385	MOLDED WEAWEWIRE SCREEN S/ST316L 800SQ.CM 50MIC AMIAD 2" NBR SEALS	1
15	700101-000386	MOLDED WEAWEWIRE SCREEN S/ST316L 800SQ.CM 80MIC AMIAD 2" NBR SEALS	1
15	700101-000389	MOLDED WEAWEWIRE SCREEN S/ST316L 800SQ.CM 200MIC AMIAD 2" NBR SEALS	1
15	700101-000390	MOLDED WEAWEWIRE SCREEN S/ST316L 800SQ.CM 300MIC AMIAD 2" NBR SEALS	1

2" TAF-500

Pos.	Part No.	Description	Qty
15	700101-000391	MOLDED WEAWEWIRE SCREEN S/ST316L 800SQ.CM 500MIC AMIAD 2" NBR SEALS	1
15	700101-000638	WEAWEWIRE SCREEN S/ST316L 800SQ.CM 10MIC TAF-500 NBR SEALS	1
15	700101-000639	WEAWEWIRE SCREEN S/ST316L 800SQ.CM 25MIC TAF-500 NBR SEALS	1
15	700101-000640	MOLDED WEAWEWIRE SCREEN S/ST316L 800SQ.CM 100MIC TAF-500 NBR SEALS	1
15	700101-000641	MOLDED WEAWEWIRE SCREEN S/ST316L 800SQ.CM 130MIC TAF-500 NBR SEALS	1
16	710103-005731	LID 2"TL RPA BSPT W/1 1/2"	1
17	710101-000551	2"T NUT RPA BLACK	1
18	710101-001370	2" PLASTIC BEARING ACETAL BLACK	1
19	780101-000955	CONNECTOR 1 1/2" FEMALE/MALE PLASTIC	1
22	710103-001212	INSTRUMENTATION BRACKET 2"-3" TAF-500/750 S/ST316L	1
100	770102-000169	PARKER O-RING 2-437 NBR 50 SHORE NO FLASH WELL LUBRICATED	1
101	770102-000069	PARKER O-RING 2-028 NBR 70 SHORE	1
102	770102-000096	PARKER O-RING 2-129 NBR 70 SHORE	1
103	770102-000130	PARKER O-RING 2-242 NBR 70 SHORE NO FLASH	2
104	770102-000092	PARKER O-RING 2-125 NBR 70 SHORE NO FLASH	1
105	770101-000049	MM O-RING SEAL ID30MM TH3MM NBR 70 SHORE NO FLASH	1
106	710101-000767	TAF-500/750 SEAL PU NATURAL	1
107	770101-000036	MM O-RING SEAL ID10MM TH2MM NBR 70 SHORE	1
108	770101-000051	MM O-RING SEAL ID45MM TH3.5MM NBR 70 SHORE NO FLASH	1
200	760101-000713	PHILLIPS PAN MACHINE SCREW M5 8MM S/ST316 DIN7985	4

2" TAF-500

Pos.	Part No.	Description	Qty
201	760101-000530	PHILLIPS PAN MACHINE SCREW M5 8MM S/ST304 DIN7985	4
202	760101-000607	HEX BOLT FULL THRD M6 60MM S/ST316 DIN933	4
203	760103-000094	FLAT WASHER M6 DIN125 S/ST316	12
204	760102-000085	HEX NUT M6 S/ST316 DIN934	4
205	760101-000544	SOCKET SET SCREW M6 6MM S/ST304 DIN916	2
206	760101-000443	HEX BOLT FULL THRD M6 15MM S/ST304 DIN933	2
207	760101-000445	HEX BOLT FULL THRD M6 25MM S/ST316 DIN933	4
300	720201-000032	DRIVE UNIT TAF750 110V AC 60HZ .15KW 1/25	1
300	720201-000033	DRIVE UNIT TAF750 220V AC 50/60HZ 1/25	1
301	710101-000476	1" COMPACT BODY NPT ACETAL BLACK	1
301	720101-000475	FLUSHING CONTROLLER GALCON O230VAC 1PH AMC-6	1
302	720103-000187	SOLENOID BACCARA GEMSOL 3WAY 3/2 NC 8W 24VAC 50HZ 1/4" 2MM BRASS	1
302	720103-000189	SOLENOID BACCARA GEMSOL 3WAY 3/2 NC 8W 24VAC 60HZ 1/4" 2MM BRASS	1
303	720104-000029	DP SWITCH UE POLYSULFONE 1/4" NPSF PARTIES 10BAR 0.69 MB-0.7BAR DRY CONTACT 0.5BAR 24-011	1
304	730110-000034	1/4"M/F FINGER FILTER PLASTIC BLACK	1
305	720501-000232	T-CONNECTOR 1/4"MX8MM X8MM BSPT RPP BLACK-RED TEFEN	1
308	720501-000198	L-CONNECTOR 1/4"M X8MM BSPT ACETAL BLACK-RED TEFEN	6
309	720501-000209	L-CONNECTOR 1/8"M X6MM BSPT ACETAL BLACK-RED TEFEN	1
310	730103-000444	NC VALVE 1.1/2" DOROT 60ANC BSP BLACK HYDRAULIC PLASTIC FLUSHING	1
700194-000045	700194-000045	TAF STD PREVENTIVE MAINTENANCE ONE YEAR	0