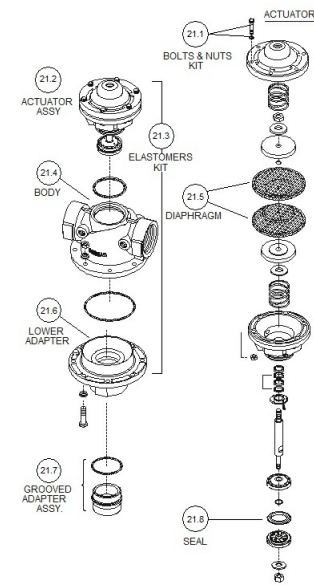
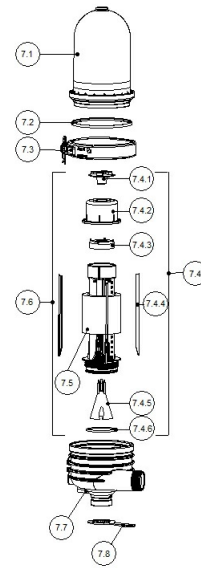
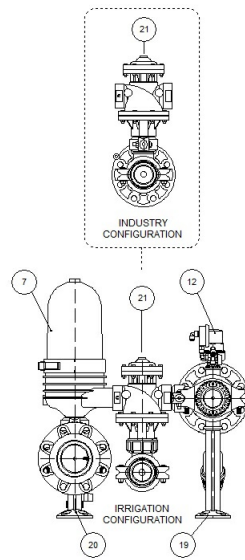
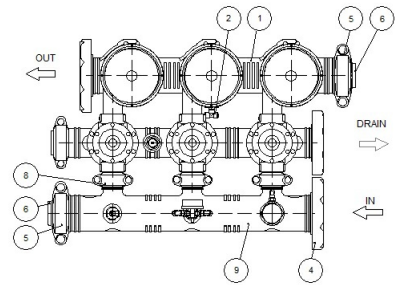
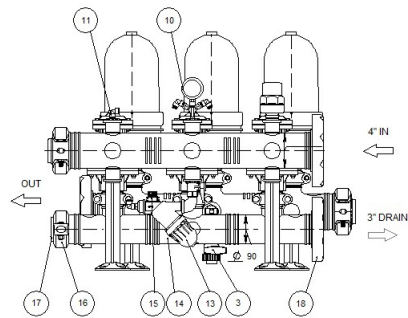


2" Spin Klin



2" Spin Klin

Pos.	Part No.	Description	Qty
1	750101-008677	OUTLET MANIFOLD PP BLACK 110MM INJECTED WELDING ROUND 3X 2" SK GRV/GRV W/B	1
2	720501-000008	T-CONNECTOR 8MMX1/4"M X8MM BSPT ACETAL BLACK JOHN-GUEST	1
2	720501-000136	T-CONNECTOR 8MMX1/4"M X8MM BSPT RPP BLACK TEFEN	1
3	730104-000032	2-WAY BALL VALVE 3/4" M/F PVC GREY MANUAL PLASSON	1
3	730104-000232	2-WAY BALL VALVE 3/4" M/F	1
4	700190-000227	4" AKF UNIVERSAL ASSEMBLY	2
5	780102-000032	4" GRV CONNECTOR C/ST RED POLYESTER RAL3000	2
5	780102-000055	4" GRV CONNECTOR C/ST BLUE POLYESTER RAL5010 STYLE75 DW	2
6	710101-000433	CAP 4" PP GRV BLACK	2
7	600000-xxxxxx	2" SK RPA THR. PP W/TRH1/2"	3
7.1	710103-004798	COVER 2"-3" FILTER RPP DW	1
7.1	710103-005233	COVER 2"-3" FILTER RPA BLACK	1
7.1	710103-010675	TRANSPARENT COVER 2"-3" SK PC	1
7.2	770104-000001	HYDRAULIC SEAL 2"-3" VITON 70 SHRE	1
7.2	770104-000248	HYDRAULIC SEAL 2"-3" EPDM	1
7.2	770104-000251	HYDRAULIC SEAL 2" NBR 70 SHORE	1
7.3	760108-000002	FILTER CLAMP 2"-3" S/ST304	1
7.4	700101-002255	SPINE ASSEMBLY MODEL 2.8 2-3" SK RPA	1
7.4	700101-002256	SPINE ASSEMBLY MODEL 2.8 2-3" SK RPA LCE	1
7.4	700101-002257	SPINE ASSEMBLY MODEL 2.8 2-3" SK RPP EPDM SEALS DW	1

2" Spin Klin

Pos.	Part No.	Description	Qty
7.4	700101-002258	SPINE ASSEMBLY MODEL 2.8 2-3" SK RPA AW	1
7.4	700101-002259	SPINE ASSEMBLY MODEL 2.8 2-3" SK RPA SW	1
7.4.1	710101-000435	2"SK BUTTERFLY NUT RPA BLACK	1
7.4.2	710101-000106	2"SK SPINE TIGHTENING CYLINDER RPA BLACK	1
7.4.3	710101-000436	SK SPINE PISTON HDPE NATURAL DW	1
7.4.4	760109-000045	ANTI FRICTION S/ST316 F/SK DW	1
7.4.4	760109-000467	ANTI FRICTION SUPER DUPLEX F/2.7SK DW	1
7.4.5	770104-000065	CONE MEMBRANE NATURAL 65 SHORE 2"SPIN KLIN (2.7 SPINE)	1
7.4.5	770104-000372	CONE MEMBRANE NATURAL 65 SHORE 2.8 2"SPIN KLIN	1
7.4.5	770104-000375	CONE MEMBRANE EPDM 70 SHORE 2.7SPIN KLIN DW	1
7.4.5	770104-000384	CONE MEMBRANE NATURAL 65 SHORE LCE 2.8 SPINE SK	1
7.4.6	770102-000034	PARKER O-RING 2-237 EPDM 70 SHORE YELLOW DOT	1
7.5	700101-000269	DISC SET PP 10MIC 2-3-4-6" SK	1
7.5	700101-001176	DISC SET PP 130MIC 2-3-4-6" SK DW	1
7.5	700101-001177	DISC SET PP 100MIC 2-3-4-6" SK DW	1
7.5	700101-001182	DISC SET PP 20MIC 2-3-4-6" SK DW	1
7.5	700101-001183	DISC SET PP 55MIC 2-3-4-6" SK DW	1
7.5	700101-001184	DISC SET PP 70MIC 2-3-4-6" SK DW	1
7.5	700101-001187	DISC SET PP 400MIC 2-3-4-6" SK DW	1
7.5	700101-001188	DISC SET PP 200MIC 2-3-4-6" SK DW	1

2" Spin Klin

Pos.	Part No.	Description	Qty
7.5	700101-001189	DISC SET PP 40MIC 2-3-4-6" SK DW	1
7.6	700101-002260	DISC ELEMENT PP 400MIC 2-3" SK RPA	1
7.6	700101-002261	DISC ELEMENT PP 70MIC 2-3" SK RPA	1
7.6	700101-002262	DISC ELEMENT PP 200MIC 2-3" SK RPA	1
7.6	700101-002263	DISC ELEMENT PP 100MIC 2-3" SK RPA	1
7.6	700101-002264	DISC ELEMENT PP 55MIC 2-3" SK RPA	1
7.6	700101-002265	DISC ELEMENT PP 40MIC 2-3" SK RPA	1
7.6	700101-002266	DISC ELEMENT PP 20MIC 2-3"SK RPA CLASSIC	1
7.6	700101-002267	DISC ELEMENT PP 130MIC 2-3" SK RPA	1
7.6	700101-002377	DISC ELEMENT PP 10MIC 2-3" SK RPA	1
7.7	710103-006082	BODY 2" SK BATTERY RPA GRV	1
7.8	760109-000055	WRENCH GALVANIZED F/BUTTERFLY NUT	1
8	780102-000020	2" VICTAULIC CONNECTOR	6
8	780102-000058	2" GRV CONNECTOR C/ST BLUE POLYESTER RAL5010 STYLE75 DW	9
10	700190-000339	PRESSURE GAUGE ASSEMBLY F/2" 8MM PL.J.G.	1
10	700190-001980	PRESSURE GAUGE ASSEMBLY F/2" 8MM TEF.	1
11	720501-000006	L-CONNECTOR 1/4"M X8MM BSPT ACETAL BLACK JOHN-GUEST	1
11	720501-000139	L-CONNECTOR 1/4"M X8MM BSPT ACETAL BLACK TEFEN	1
12	700190-000372	1"BARAK AIR REL.VAL.AS 8MM PL.J.G. ASSY	1
12	730108-000025	AIR RELEASE VALVE A.R.I BARAK 1" BSPT NYLON3 GREY 10BAR	1

2" Spin Klin

Pos.	Part No.	Description	Qty
13	700190-000447	3/4"CONTROL FILTER 8MM PL.J.G. BLUE ASSY.	1
13	700190-000450	3/4"CONTROL FILTER 8MM TF.RED ASSY.	1
14	750101-001477	DRAIN MANIFOLD PP BL 90MM INJ WELD ROUND 3X 2" THR/F 3"GRV 3"GRV/2"THR	1
14	750101-008088	DRAIN MANIFOLD PP BLACK 90MM INJECTED WELDING ROUND 3X 2" SK 3"GRV 3"GRV/2"THR	1
15	700190-003406	1" VACUUM BREAKER (ARKAL/SIGMA) ASSEMBLY	1
16	780102-000025	3" GRV CONNECTOR C/ST RED POLYESTER RAL3000	1
16	780102-000057	3" GRV CONNECTOR C/ST BLUE POLYESTER RAL5010 STYLE75 DW	1
17	710101-000165	CAP 3" PP GRV BLACK W/O R	1
18	700190-000195	ADAPTOR ASSY NUT+SEALS	3
18	700190-000223	3" AKF UNIVERSAL ASSY	1
19	710101-000278	2"SK LEG 300MM RPA BLACK	2
20	710101-000439	LEG 110MM RPA BLACK	2
21	730102-000106	STRAIGHT FLOW 2X2 350 BSP RPA/DUPLEX BLACK SW BERMAD	1
21	730102-000108	STRAIGHT FLOW 2X2 350 BSP RPA BLACK AGRESSIVE WATER BERMAD	1
21	730102-000119	ANGLE FLOW 2X2 350 BSP RPA BLACK AGRESSIVE WATER BERMAD	1
21	730102-000167	ANGLE FLOW 2X2 350 BSP RPA BLACK BERMAD	1
21	730102-000169	STRAIGHT FLOW 2X2 350 BSP RPA BLACK BERMAD	1
21	730102-000283	STRAIGHT FLOW 2X2 350 BSP RPA BLACK BERMAD DW	1
21	730102-000290	ANGLE FLOW 2X2 350 BSP RPA BLACK BERMAD DW	1
21.1	730113-000761	BOLTS-NUTS KIT F/2" 350 BERMAD	1

2" Spin Klin

Pos.	Part No.	Description	Qty
21.1	730113-000762	BOLTS-NUTS KIT F/2" 350 BERMAD WA	1
21.2	730113-000331	VALVE ASSY. F/2" STRAIGHT FLOW PLASTIC BERMAD WA	1
21.2	730113-000346	VALVE ASSY. F/2" ANGLE FLOW BERMAD	1
21.2	730113-000507	VALVE ASSY. F/2" STRAIGHT FLOW PLASTIC BERMAD	1
21.2	730113-000589	ACTUATOR F/2" STRAIGHT FLOW BERMAD WA-S.DUPLEX	1
21.2	730113-000869	ACTUATOR ASSY. F/2" ANGLE FLOW PLASTIC BERMAD DW	1
21.2	730113-000871	ACTUATOR ASSY. F/2" STRAIGHT FLOW PLASTIC BERMAD DW	1
21.3	730113-000763	SEALS + DIAPHRAGM KIT F/2" 350 BERMAD	1
21.3	730113-000867	ELASTOMERS KIT F/2" 350 BERMAD DW	1
21.4	730113-000317	BODY ASSY. F/2" STRAIGHT FLOW BERMAD	1
21.4	730113-000339	BODY ASSY.+LOW ADAPTOR F/2" STRAIGHT FLOW BERMAD	1
21.4	730113-000754	BODY ASSY. F/2" 350 PLASTIC BERMAD WA-DUPLEX-S/S316	1
21.4	730113-000759	BODY ASSY. F/2" 350 PLASTIC BERMAD WA	1
21.4	730113-000872	BODY ASSY. F/2" 350 BLACK PLASTIC BERMAD BSP DW	1
21.5	730113-000446	DIAPHRAGM F/2" STRAIGHT FLOW BERMAD	1
21.6	730113-000315	LOWER ADAPTOR F/2" STRAIGHT FLOW PLASTIC BERMAD	1
21.6	730113-000753	LOWER ADAPTOR F/2" 350 PLASTIC BERMAD WA-DUPLEX-S/S316	1
21.6	730113-000758	LOWER ADAPTOR F/2" 350 PLASTIC BERMAD WA	1
21.6	730113-000873	LOWER ADAPTOR F/2" 350 BLACK PLASTIC BERMAD BSP DW	1
21.7	700190-003407	2" GROOVED-BSP THREAD CONNECTOR ASSY	1

---

---

2" Spin Klin

Pos.	Part No.	Description	Qty
21.7	730113-000883	ADAPTOR+SEAL F/2" 350 BLACK PLASTIC BERMAD GRV/TRH DW	1
21.8	730113-000324	PLUG SEAL F/2" STRAIGHT FLOW BERMAD	1
21.8	730113-000881	SEAL F/2" VALVE EPDM BERMAD DW	1