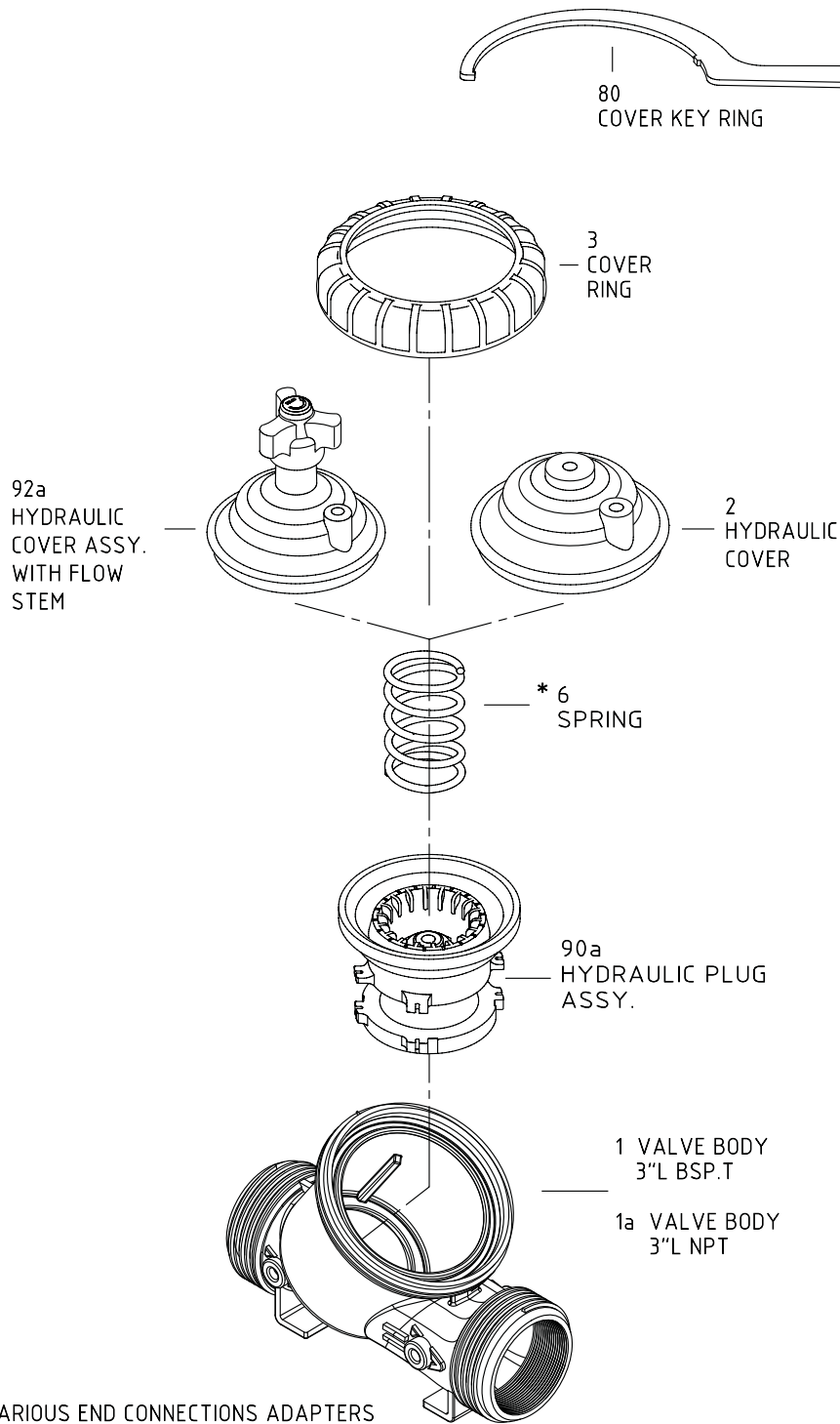




Y-Pattern Hydraulic Control Valves

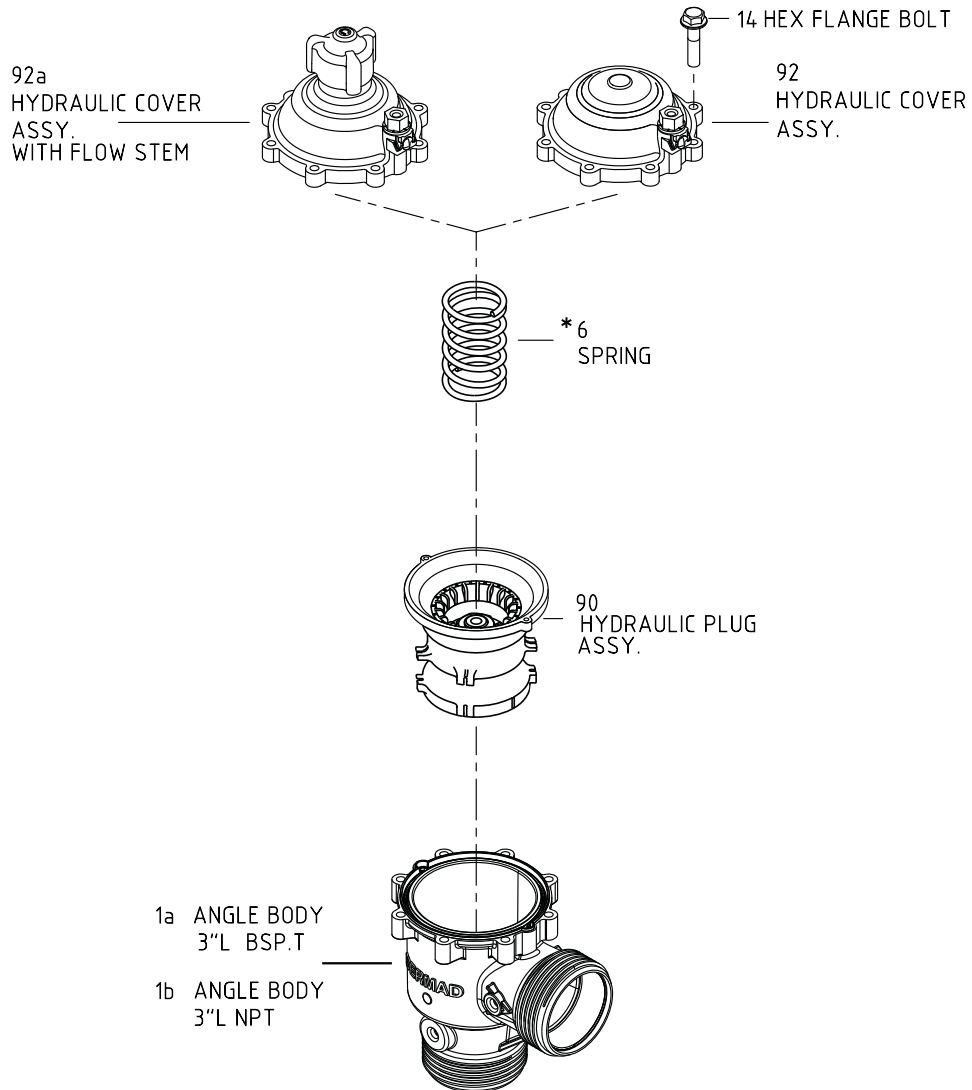
Sizes: 3L - 4"; DN80L-100





A-Pattern Hydraulic Control Valves

Sizes: 3L-4"; DN80L-100



VARIOUS END CONNECTIONS ADAPTERS
(SEE PAGE 02g)

*DIFFERENT SPRINGS



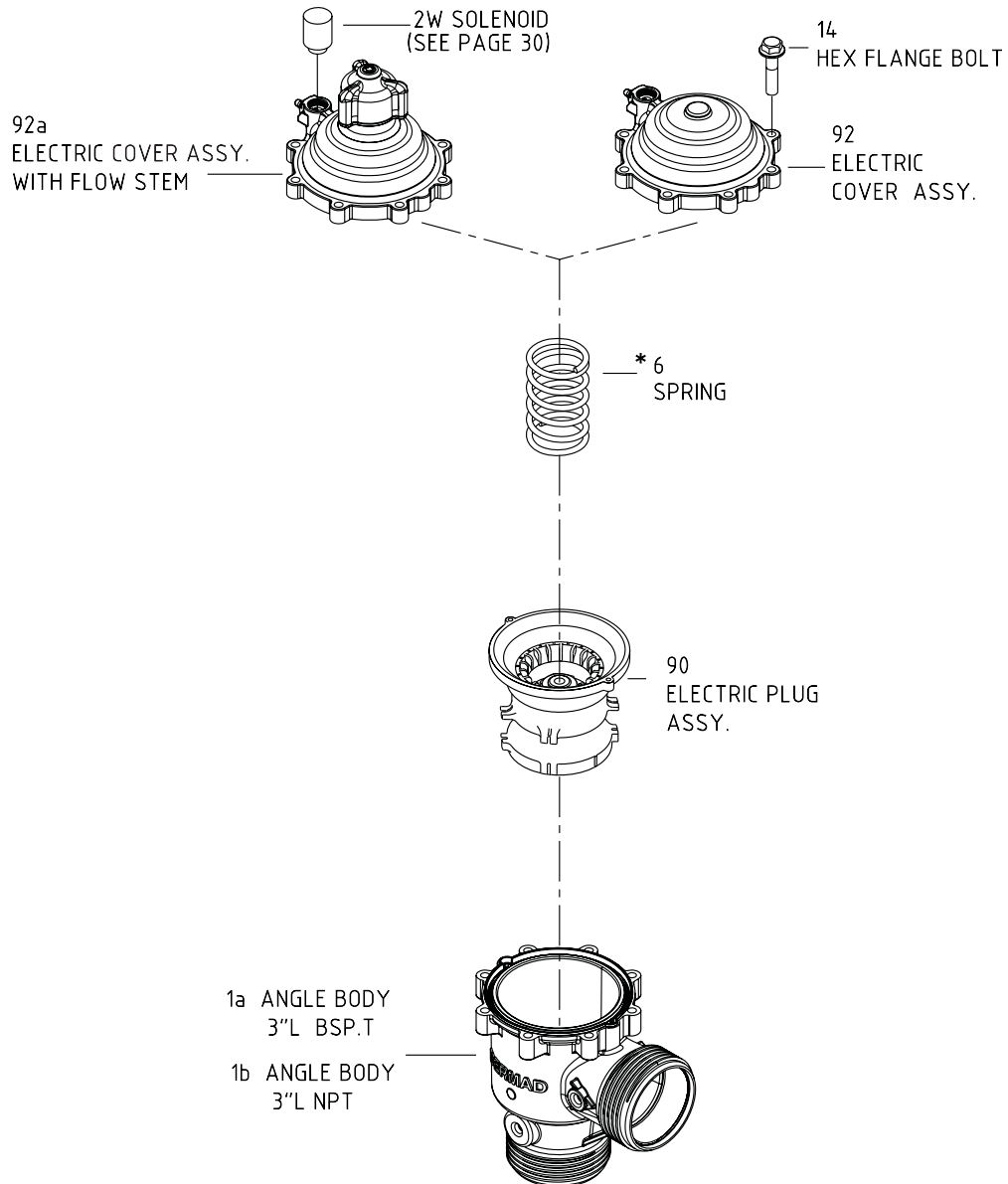
BERMAD IR Spare Parts



100 Series

A-Pattern Electric Control Valves

Sizes: 3L-4"; DN80L-100



VARIOUS END CONNECTIONS ADAPTERS
(SEE PAGE 02g)

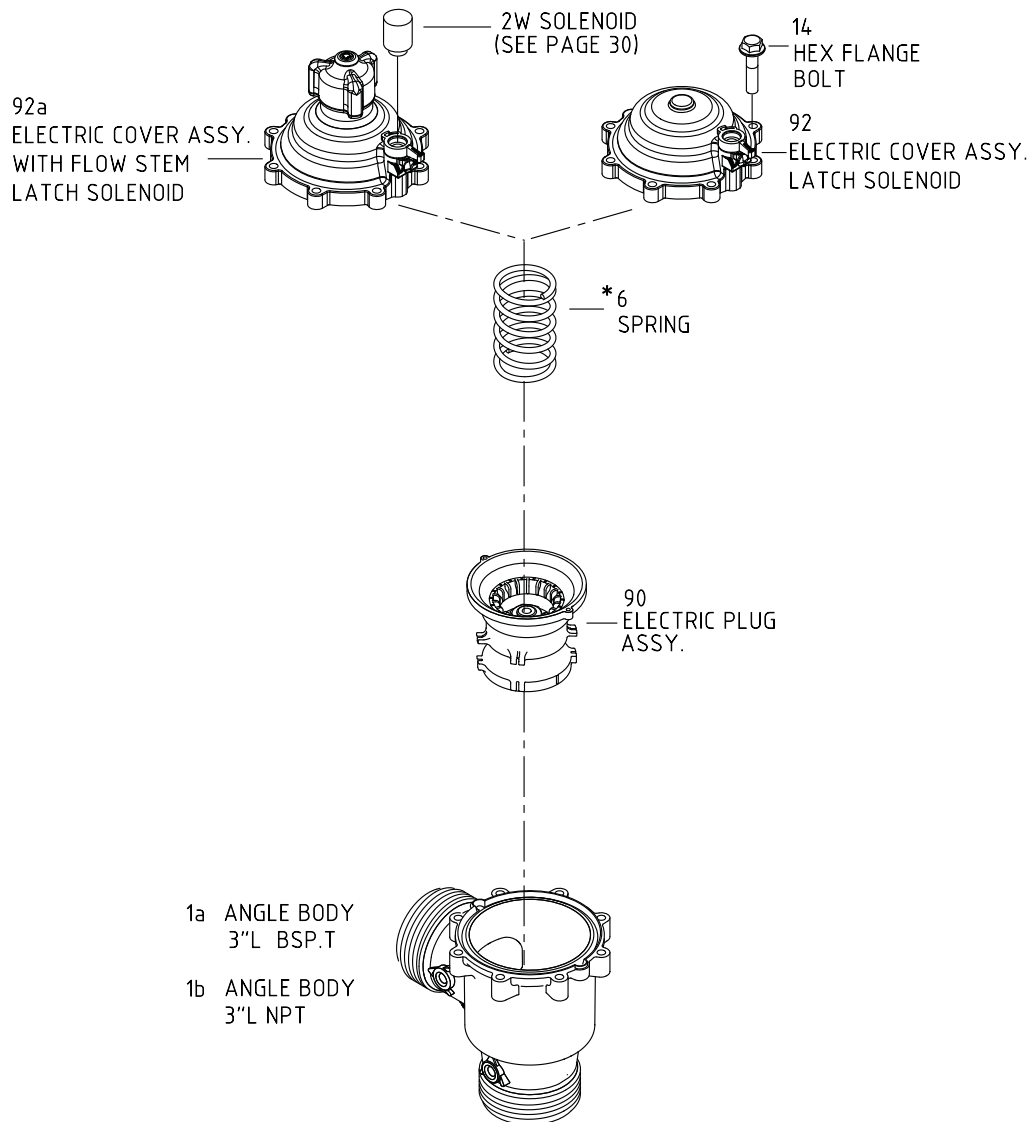
* DIFFERENT SPRINGS

Effective 10/2014



A-Pattern Electric Control Valves Latch Solenoid Model

Sizes: 3L-4"; DN80L-100



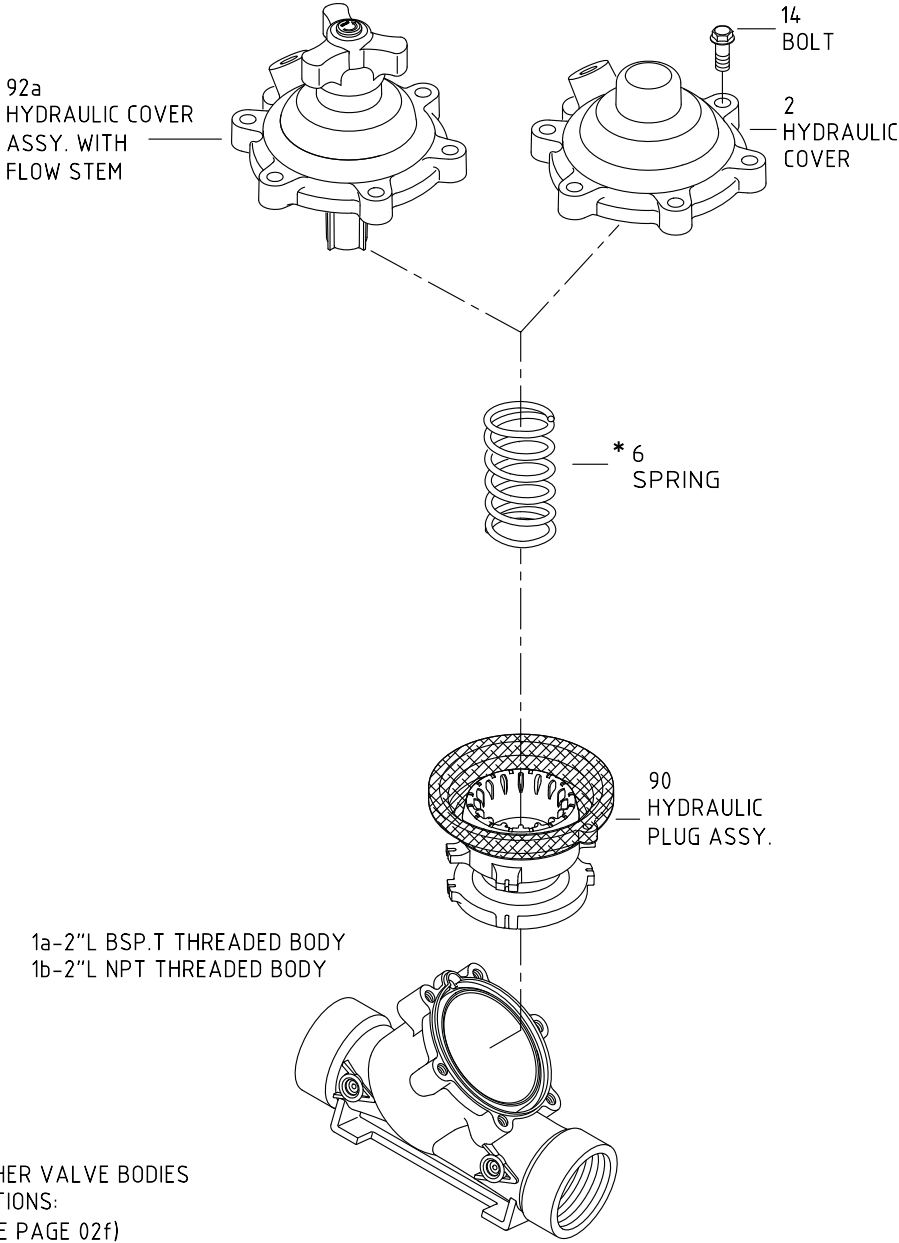
VARIOUS END CONNECTIONS ADAPTERS
(SEE PAGE 02g)

* DIFFERENT SPRINGS



Y, A, T, & D-Pattern Hydraulic Control Valves

Sizes: 2L-3"; DN50L-80



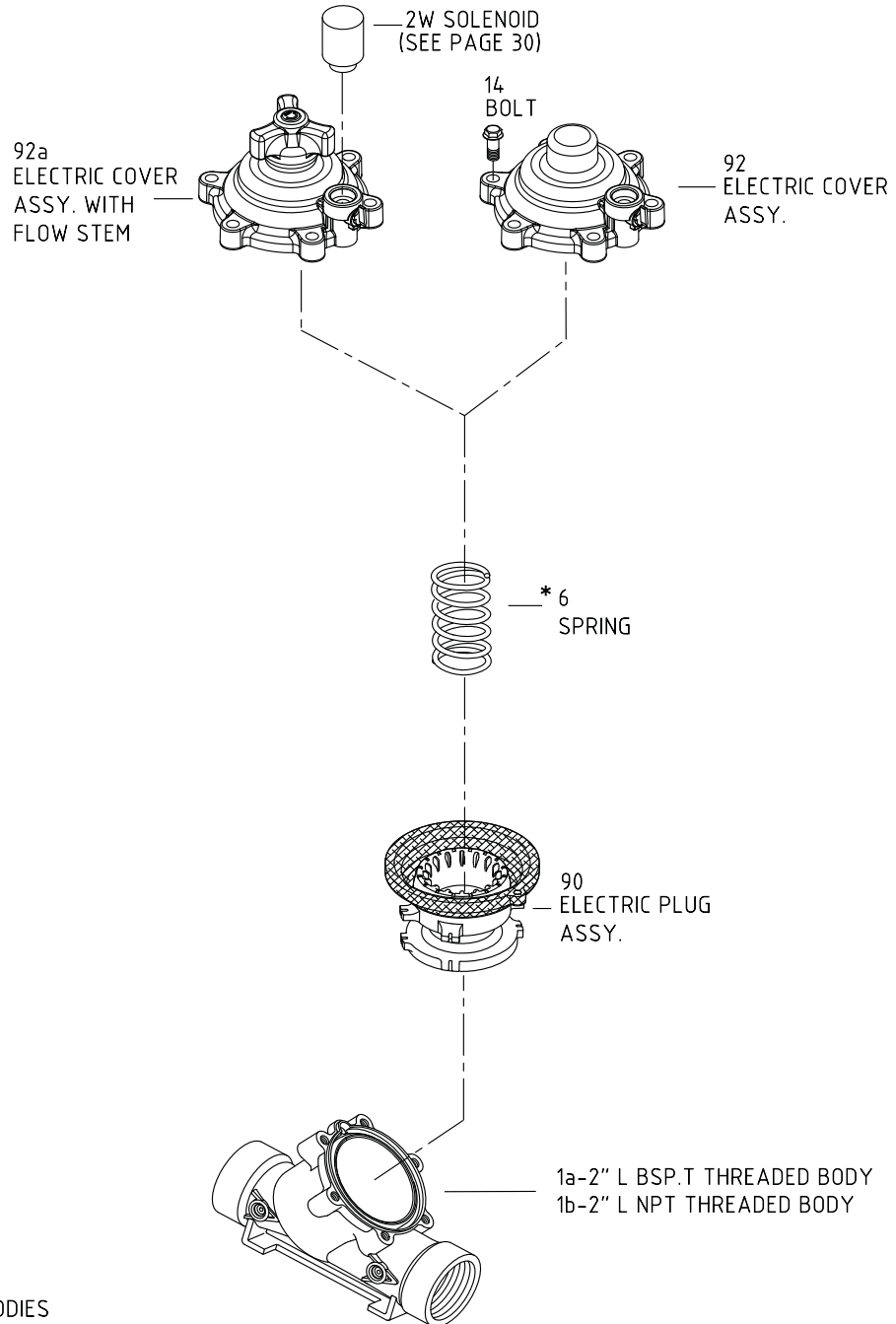
OTHER VALVE BODIES
 OPTIONS:
 (SEE PAGE 02f)
 VARIOUS END CONNECTIONS ADAPTERS
 (SEE PAGE 02g)

* DIFFERENT SPRINGS



Y, A, T, & D-Pattern Electric Control Valves

Sizes: 2L-3"; DN50L-80

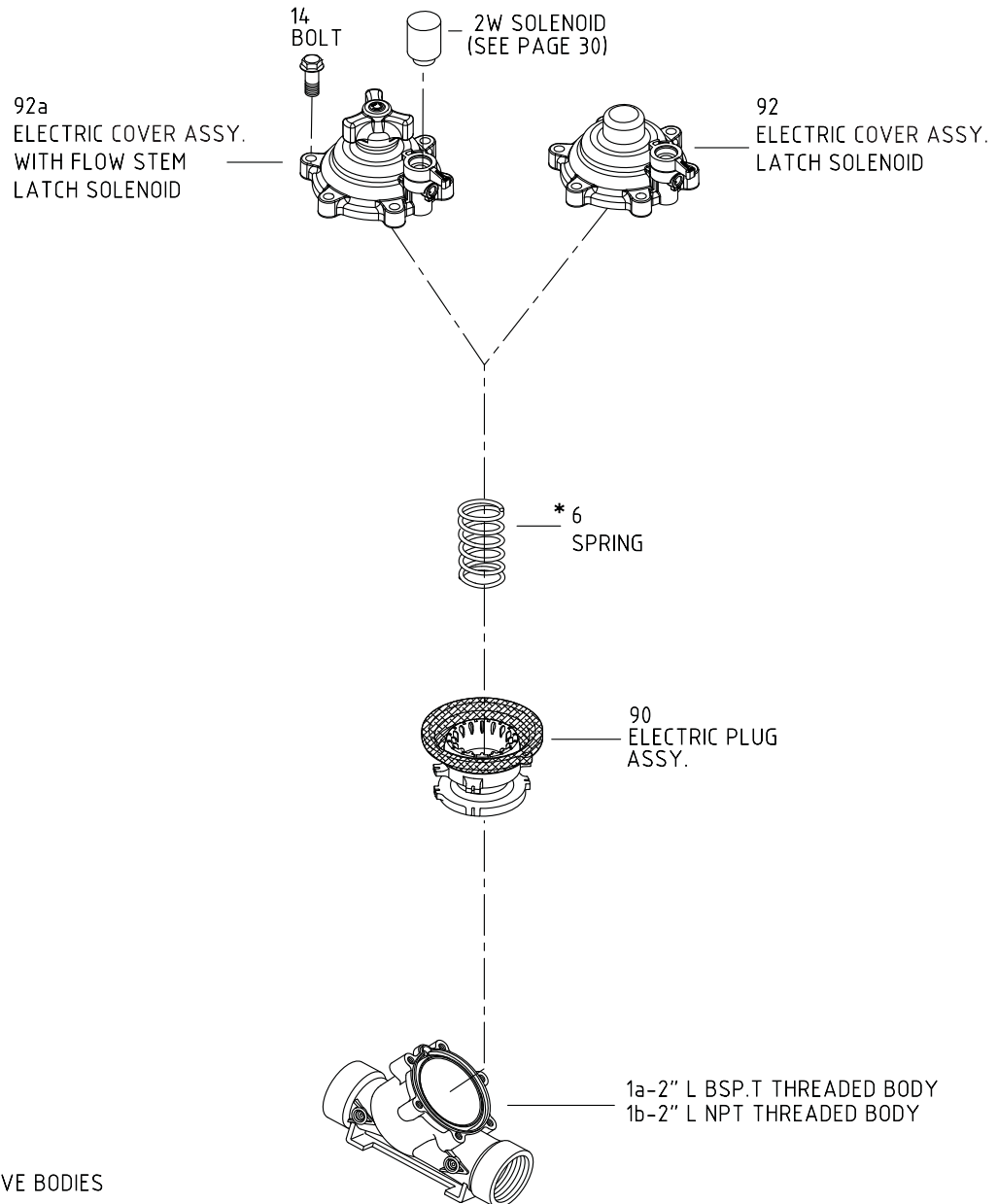


OTHER VALVE BODIES
OPTIONS:
(SEE PAGE 02f)
VARIOUS END CONNECTIONS ADAPTERS
(SEE PAGE 02g)
* DIFFERENT SPRINGS



Y, A, T, & D-Pattern Electric Control Valves Latch Solenoid Model

Sizes: 2L-3"; DN50L-80



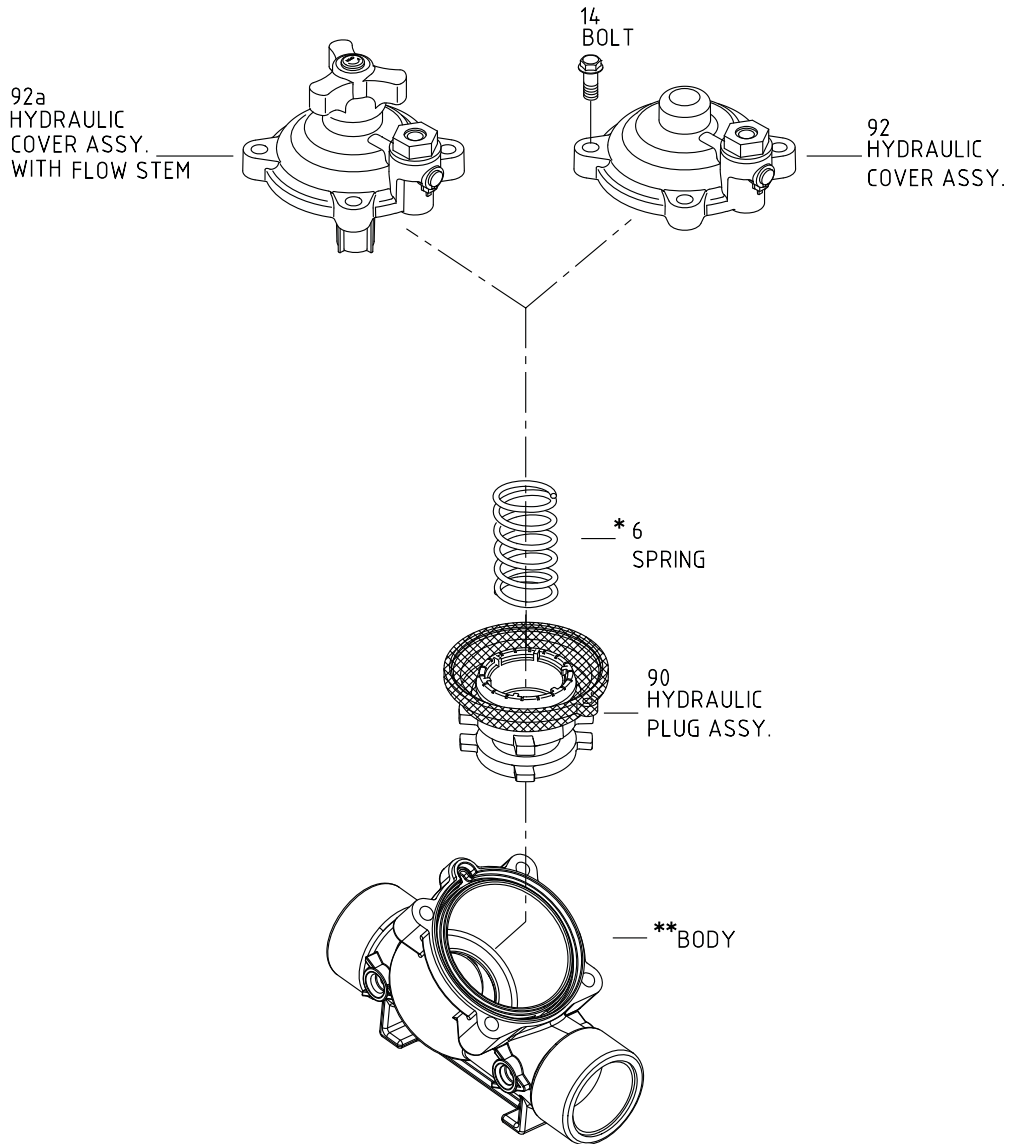
OTHER VALVE BODIES
OPTIONS:
(SEE PAGE 02f)
VARIOUS END CONNECTIONS ADAPTERS
(SEE PAGE 02g)

* DIFFERENT SPRINGS



Y-Pattern Hydraulic Control Valves

Sizes: 1½-2"; DN40-50



**** OPTION BODY**

2" ; DN50 -1e,1d

1.5" ; DN40 - 1a,1b

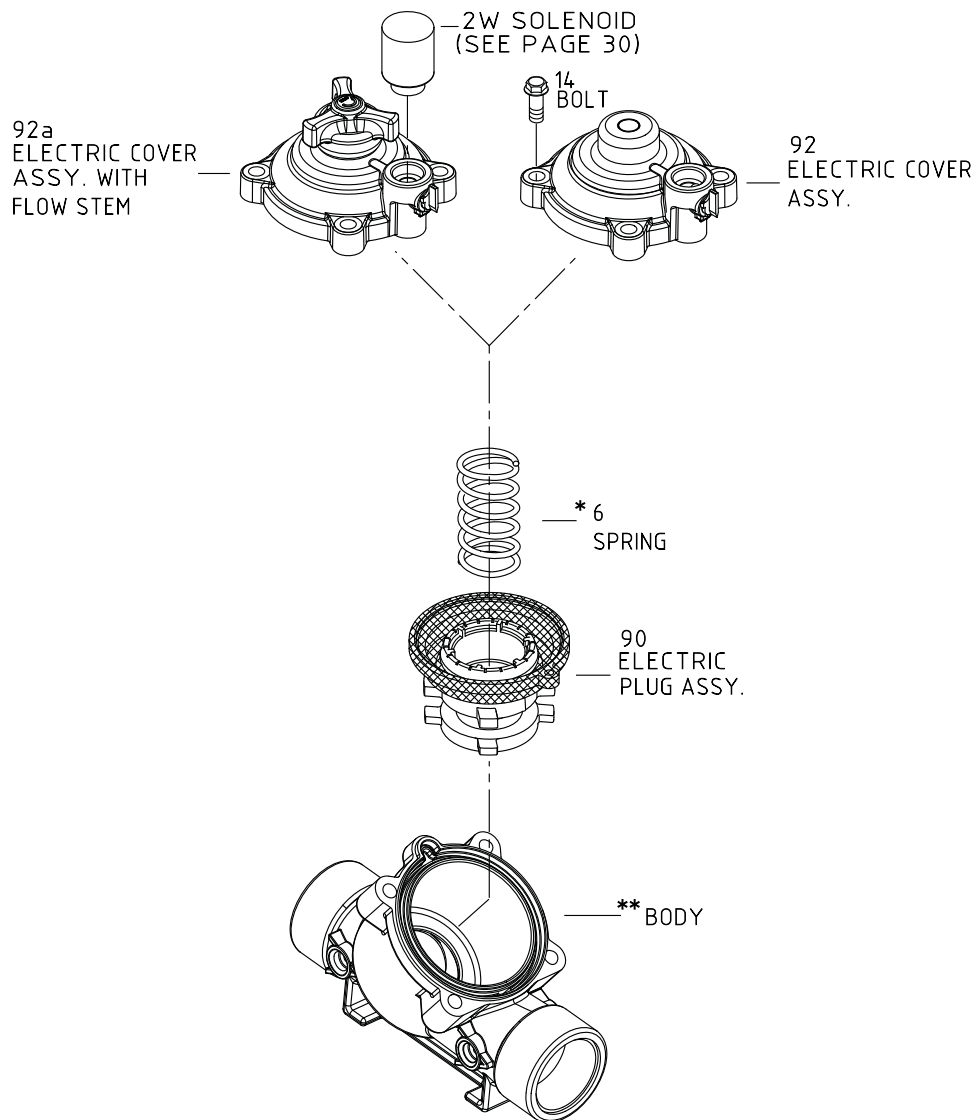
2" ; DN50-BSP.F BODY-1c

* DIFFERENT SPRINGS



Y-Pattern Electric Control Valves

Sizes: 1½-2"; DN40-50



* **OPTION BODY**

2" ; DN50 -1e,1d

1.5" ; DN40 - 1a,1b

2" ; DN50-BSP.F BODY-1c

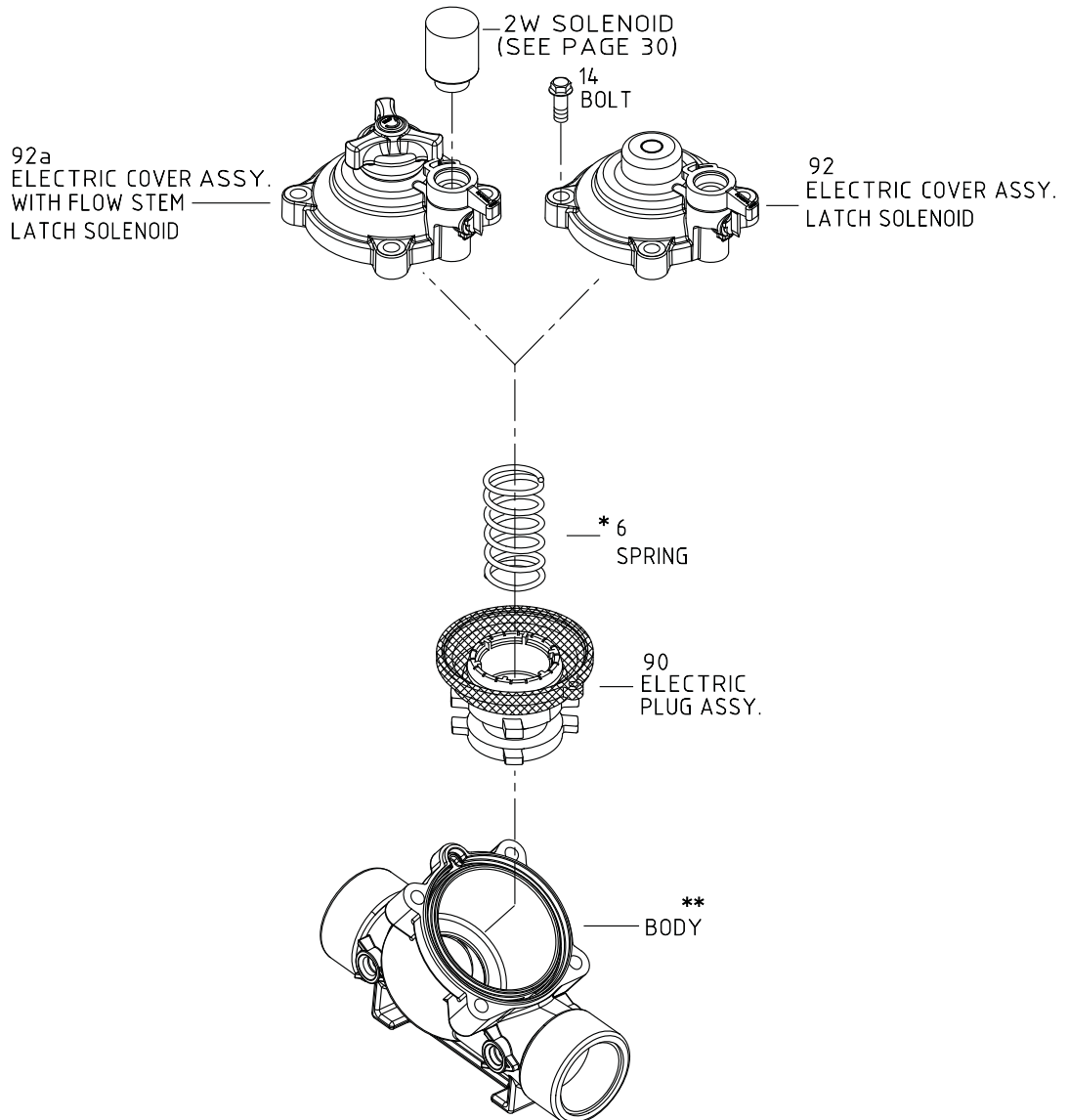
DIFFERENT SPRINGS



Y-Pattern Electric Control Valves

Latch Solenoid Model

Sizes: 1½-2"; DN40-50



- ** **OPTION BODY**
 - 2" ; DN50 -1e,1d
 - 1.5" ; DN40 -1a,1b
 - 2" ; DN50-BSP.F BODY-1c
- * DIFFERENT SPRINGS



BERMAD IR Spare Parts

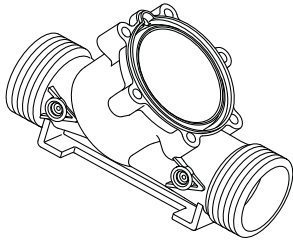


100 Series

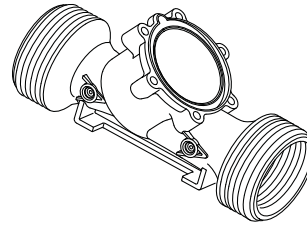
Y, A, T & D- Bodies Patterns Options

Sizes: 2L-3"; DN50L-80

1f-2.5"BSP.F
THREAD BODY

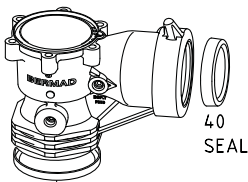


1d-3"BSP.T THREAD BODY
1e-3"NPT THREAD BODY



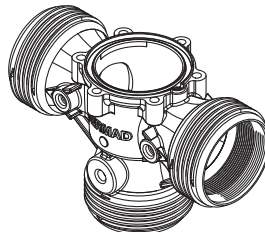
VARIOUS END CONNECTORS
ADAPTERS SEE PAGE 02g

95j-3"BSP.T
ANGLE HORN BODY ASSY.
95k - 3"NPT
ANGLE HORN BODY ASSY.



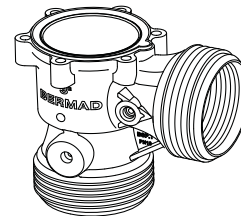
S.S. REINFORCEMENT
RING

95g 3" BSP.T
EXTERNAL THREAD ENDS
TEE BODY
95h 3" NPT
EXTERNAL THREAD ENDS
TEE BODY



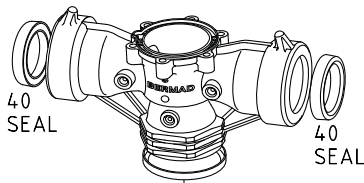
VARIOUS END CONNECTORS
ADAPTERS SEE PAGE 02g

1f -3"BSP.T
EXTERNAL THREAD ENDS
ANGLE BODY
1u - 3"NPT
EXTERNAL THREAD ENDS
ANGLE BODY



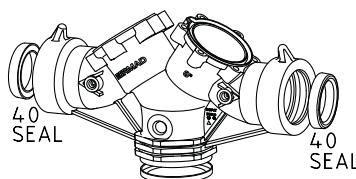
VARIOUS END CONNECTORS
ADAPTERS SEE PAGE 02g

95l - 3"BSP.T
HORN TEE BODY ASSY.
95m- 3"NPT
HORN TEE BODY ASSY.



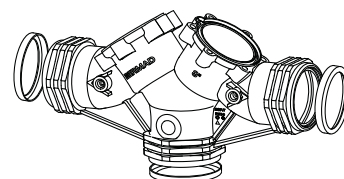
S.S. REINFORCEMENT
RING

95n-3"BSP.T
HORN DUAL BODY ASSY.
95p-3"NPT
HORN DUAL BODY ASSY.



S.S. REINFORCEMENT
RING

95r -3"BSP.T
THREAD DUAL BODY ASSY.
95s -3"NPT
THREAD DUAL BODY ASSY.



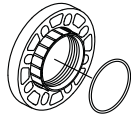
S.S. REINFORCEMENT
RING



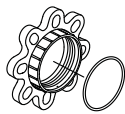
End Connections Adaptors Options

Sizes: 3-4"; DN80-100

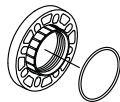
FLANGE ASSY. END CONNECTIONS ADAPTORS



91
4" PLASTIC FLANGE
ASSY.



91a
4" METAL FLANGE
ASSY.



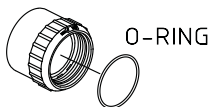
91
3" PLASTIC FLANGE
ASSY.



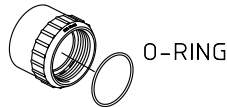
91a
3" METAL FLANGE
ASSY.

PVC END CONNECTIONS ADAPTORS

T1 ID 90mm
OD 110mm



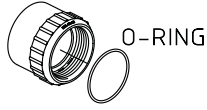
T2 ID 110 mm
OD 125 mm



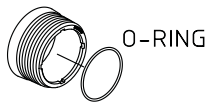
T3 ID 3"
OD 4"



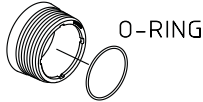
T4 ID 4"



BJ ID 75mm
OD R3"(3"BSPT)

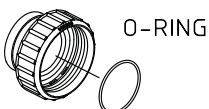


NJ ID 2.5"
OD 3"NPT

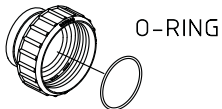


GROOVE END CONNECTIONS ADAPTORS

TV -3 3" GROOVE
ADAPTOR

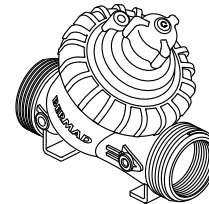


TV -4 4" GROOVE
ADAPTOR

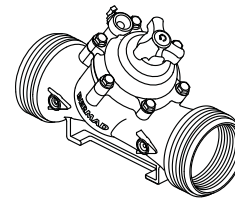


SUTABLE CONFIGURATION

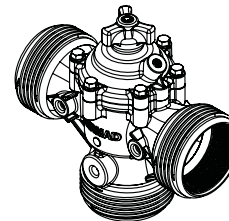
3"
L
Y PATTERN



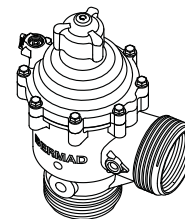
3"
Y PATTERN



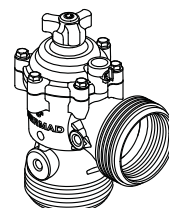
3"
T PATTERN



3"
L
A PATTERN



3"
A PATTERN





Boxer-Pattern Hydraulic Control Valve

Size: 6"; DN150

